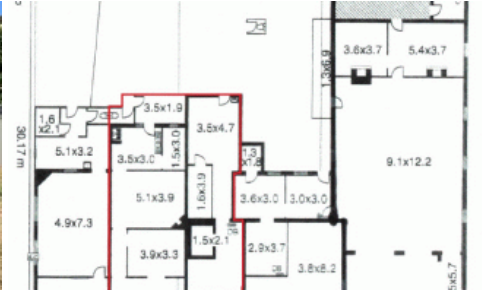


Leased



135 Port Rd, Queenstown



RETAIL/ OFFICE/ CONSULTING/ STUDIO - 147 sqm (approx.)

AREA 147 SQM (APPROX.)

VARIOUS USE

EXPOSURE PLUS

FLEXIBLE LEASE TERMS & CONDITIONS

INSPECTION A MUST!

If you have any questions or would like to inspect, please do not hesitate to contact Dion on 0431 576 848, Pasquale on 0409 465 863 or the Mastracorp Landline on 08 8212 0140

The above information provided has been furnished to us by the vendor/s. We have not verified whether or not that information is accurate and do not have any belief in one way or the other in its accuracy. We do not accept any responsibility to any person for its accuracy and do no more than pass it on. All interested parties should make and rely upon their own inquiries in order to determine whether or not this information is in fact accurate.

Price \$19,000 p.a +
Outgoings + GST

Property Type Commercial

Property ID 1980

Agent Details

Pasquale Mastrangelo - 0409 465 863

Dion Mastrangelo - 0431 576 848

Office Details

Adelaide
Unit 4/ 60 West Terrace, Adelaide
SA 5000 Australia
08 8212 0140



MASTRACORP
REAL ESTATE